

From Metro to Industries
ANC SERVICES
Leads the way...



ANC Services
A BOND OF TRUST



ENGINEERING, PROCUREMENT, CONTRACTING & CONSULTANCY
MEP Contractor



ANC Services is an 'A' Class License Contractor Company in the business of providing Detailed Engineering services, Turnkey contracts and O&M services in Electrical and Instrumentation discipline for various types of projects in the field of Metro Projects, Highway Projects, Petrochemical, Warehouse, Distillery Plant, Beverage Industry, Paper industries and all type of Industries, as well as Commercial Complex, Residential Complex and Government Tenders in PAN India.

The company has been in this field for carrying out extensively all types of Electrification Work, Plumbing, Fire and IT Solutions. The company has a team of highly qualified and professional Engineers, Draughtsmen and Site Supervisors and Skilled personnel to complete the project in desired time schedule and still maintain the highest quality work.

Earlier we are doing all EPC contracts work under Vidhyut Control India Pvt. Ltd. which is LT Panel Manufacturing company since 1994. But from past 3-4 years we have made a separate company by name of ANC Services which does all kind of HT/LT contracting works.

Madhur Mittal is MD of ANC Services who is in business from past 18 years and also associated in below mentioned projects:

REAL ESTATE : Landcraft Developers Pvt. Ltd., RS Landcraft LLP, Platina Real Estate Pvt. Ltd., Coral Infrastructure Pvt. Ltd.

PUBLICATIONS : ReMadhav Publications Pvt. Ltd.

MANUFACTURING SECTOR : LGSUS Industries Pvt. Ltd., Dhanad International Pvt. Ltd.

Thanking you and assuring you of our prompt and quality services at all times.

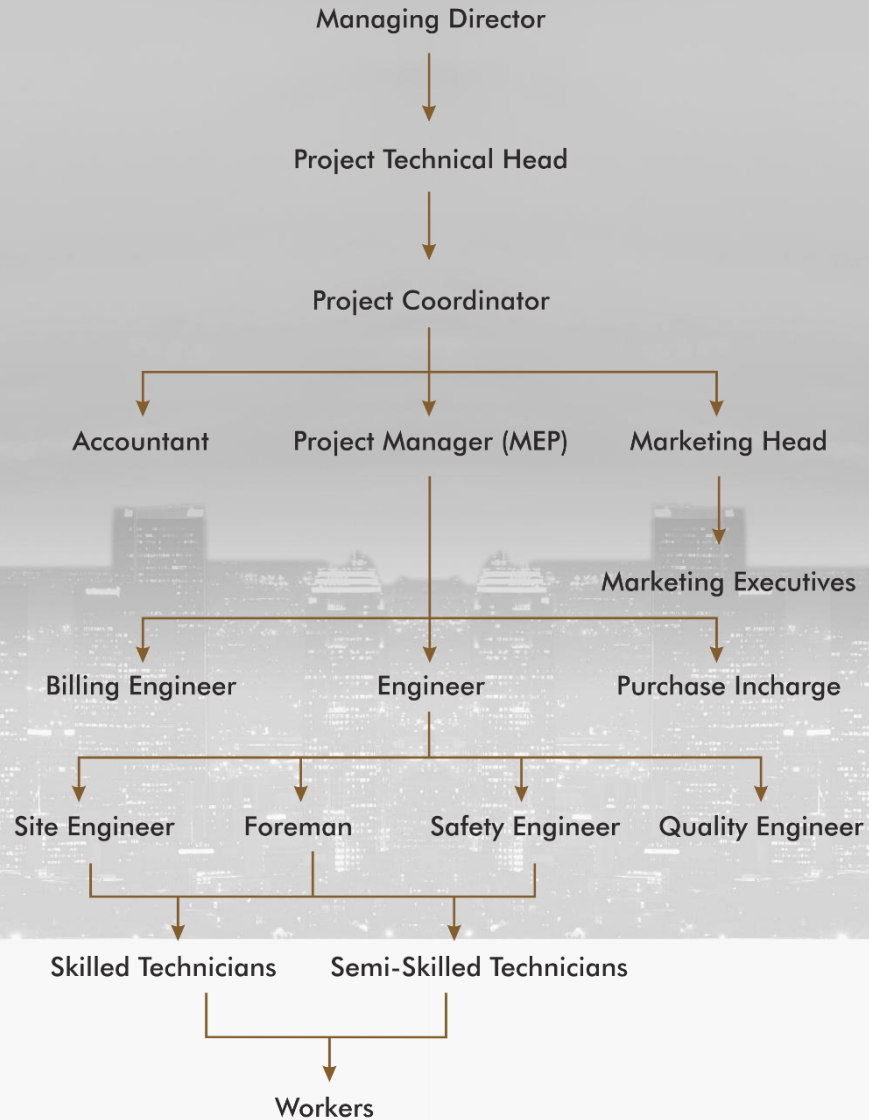
Madhur Mittal

Managing Director

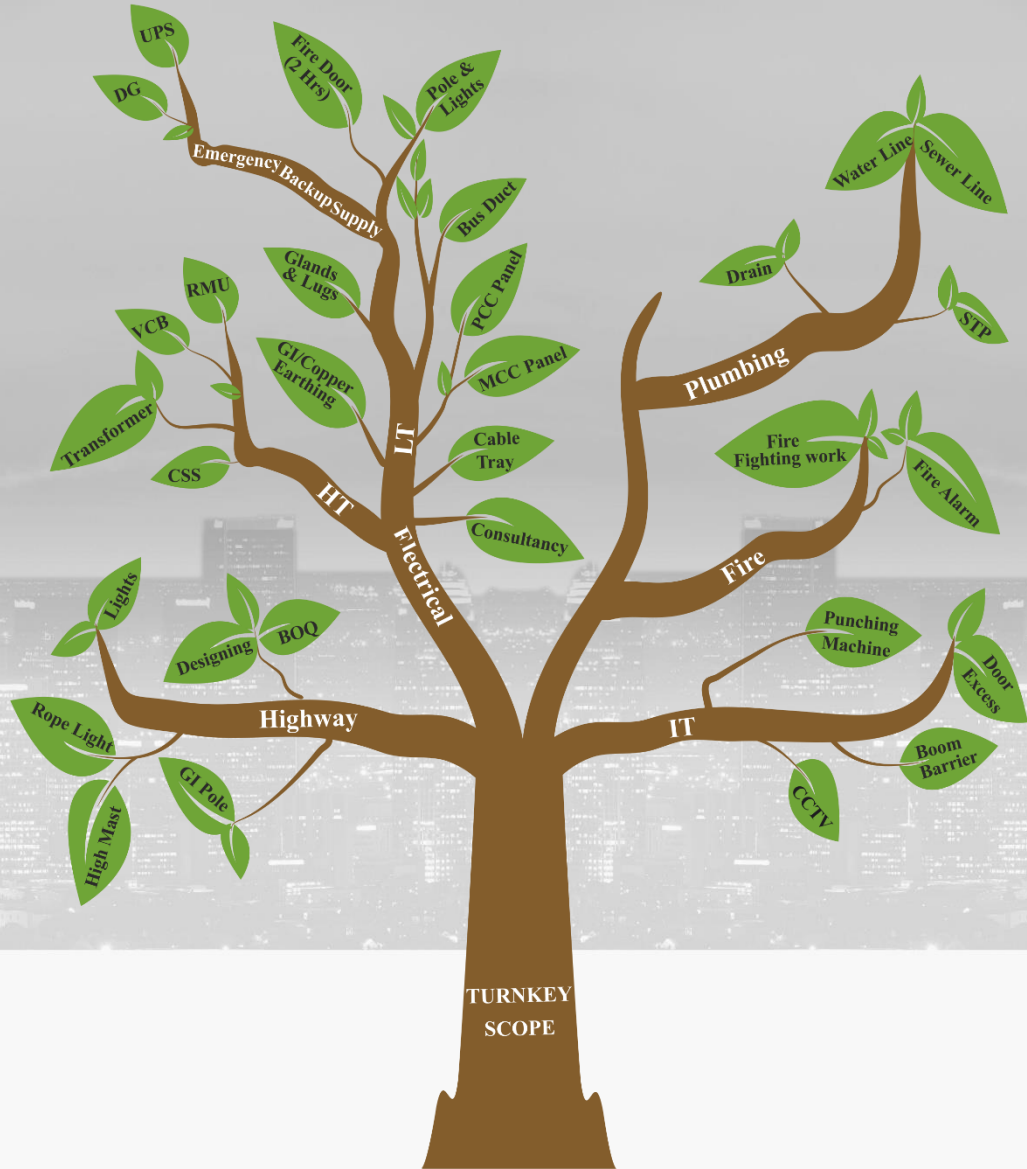


— Our Technical Team —

ORGANISATION CHART



OUR EXPERTISE



AREA OF OPERATION

- 1 EPC work in Electrical Field, Plumbing, Fire and all type of IT Solutions.
- 2 EPC work for Highway / Industries with designing including Lighting design.
- 3 Plant Operations and Maintenance/Trouble Shooting.
- 4 Testing & Commissioning of all type HT/ LT Pannel and all types of Relay and Breakers and Transformer, Switch yard up to 4000 kv.
- 5 Supply & Testing & Commissioning of Lighting arrester.
- 6 Supply of all type of LT Panels, rising main, Meter Board, Bus Duct and Fire Door.
- 7 Supply of all types of CSS, transformers, VCB, RMU, DG.
- 8 Supply of all types of material like cable, cable tray, glands, lugs, etc.
- 9 Supply of all types of Indoor and Outdoor/Decorative fixtures.

SOME OF OUR REPUTED CLIENTS



MAJOR PROJECTS

COMMERCIAL & RESIDENTIAL

- ▶ WAVE CITY
- ▶ SG HOMES
- ▶ PRAKASHAMUSEMENTS
- ▶ GAURCITY
- ▶ DIVYANSH HOMES
- ▶ RUCHIRA GROUP
- ▶ AROCON RAINBOW
- ▶ APEX GROUP
- ▶ GOLDEN GATE
- ▶ LANDCRAFT
- ▶ PRATEEK GROUP
- ▶ EMENOX LA SOLARA

INDUSTRY

- ▶ DAYALAMINATES
- ▶ GRAPHITE FOILS INDIA PVT LTD
- ▶ TECH -LONG PVT LTD
- ▶ PREMINDUSTRY
- ▶ JINDAL PIPES LTD
- ▶ SILVERTON

FOOD & BEVERAGES

- ▶ MOON BEVERAGES LTD
- ▶ AGRO FARM VENTURES
- ▶ MMX FOODS PVT LTD

PETROCHEMICAL

- ▶ BHARAT PETROLEUM
- ▶ GPS RENEWABLES
- ▶ RELIANCE BIO ENERGY PVT. LTD.

METRO

- ▶ BANGALORE METRO RAIL CORPORATION LTD
- ▶ AGRA METRO RAIL CORPORATION LTD

HOSPITAL

- ▶ CLOVE DENTAL
- ▶ J.P. HOSPITAL

CORPORATE SECTOR

- ▶ ANTELEC LTD.
- ▶ FPI INDIA PVT. LTD.

SUGAR INDUSTRY

- ▶ RCP DISTILLERY PLANT

HIGHWAY

- ▶ RCC DEVELOPERS PVT. LTD.

MANUFACTURING SECTOR

- ▶ HALONIX TECHNOLOGIES PVT. LTD.

TEXTILE

- ▶ VARDHAMAN SPINNING MILLS (VSM)

OTHERS

- ▶ SUMITRA WOOD CRAFT
- ▶ SFK INDUSTRIES PVT LTD
- ▶ DEV GROUP
- ▶ SUPERLITE JOINTINGS PVT LTD
- ▶ JAKSON LTD



**HON'BLE PM MODI JI INAUGURATED
BENGALURU METRO RAIL CORPORATION LIMITED, KARNATAKA**



BENGALURU METRO RAIL CORPORATION LIMITED



WAVE CITY, Ghaziabad



WAVE CITY, Ghaziabad



WAVE CITY, Ghaziabad



WAVE CITY, Ghaziabad



WAVE CITY, Ghaziabad



WAVE CITY, Ghaziabad



WAVE CITY, Ghaziabad



RELIANCE BIO - ENERGY PLANT, Haryana



RELIANCE BIO - ENERGY PLANT, Haryana



RELIANCE BIO - ENERGY PLANT, Haryana



RELIANCE BIO - ENERGY PLANT, Haryana



RELIANCE BIO - ENERGY PLANT, Haryana



RELIANCE BIO - ENERGY PLANT, Haryana



RELIANCE BIO - ENERGY PLANT, Haryana



RELIANCE BIO - ENERGY PLANT, Haryana



RELIANCE BIO - ENERGY PLANT, Haryana



RELIANCE BIO - ENERGY PLANT, Haryana



MOON BEVERAGE (COCA-COLA PLANT), Dhaulana



MOON BEVERAGE (COCA-COLA PLANT), Dhaulana



MOON BEVERAGE (COCA-COLA PLANT), Dhaulana



MOON BEVERAGE (COCA-COLA PLANT), Dhaulana



MOON BEVERAGE (COCA-COLA PLANT), Dhaulana



MOON BEVERAGE (COCA-COLA PLANT), Dhaulana



MOON BEVERAGE (COCA-COLA PLANT), Dhaulana



MOON BEVERAGE (COCA-COLA PLANT), Dhaulana



MOON BEVERAGE (COCA-COLA PLANT), Dhaulana



MOON BEVERAGE (COCA-COLA PLANT), Dhaulana



MOON BEVERAGE (COCA-COLA PLANT), Dhaulana



MOON BEVERAGE (COCA-COLA PLANT), Dhaulana



MOON BEVERAGE (COCA-COLA PLANT), Dhaulana



MOON BEVERAGE (COCA-COLA PLANT), Dhaulana



MOON BEVERAGE (COCA-COLA PLANT), Dhaulana



AGRA METRO RAIL CORPORATION



AGRA METRO RAIL CORPORATION



AGRO FARM VENTURE, Shimla

MAIN HYDRANT PUMP
S.N. : 1012 0300322
MAKE : WGLD
POWER : 170 HP
S/PN : 1400
CAPACITY : 2000 LPM
HEAD : 100 MTR.
START STOP PRESSURE : 3 BAR/MANUAL

HYDRANT JACKET PUMP
S.N. : 1012 0300322
MAKE : WGLD
POWER : 170 HP
S/PN : 1400
CAPACITY : 2000 LPM
HEAD : 100 MTR.
START STOP PRESSURE : 3 BAR/MANUAL

100 L

100 L

100 L

HYDRANT JACKET PUMP

HYDRANT PUMP



AGRO FARM VENTURE, Shimla

ANC is an Implementation Partner of Vidhyut Control.



VIDHYUT CONTROL AT A GLANCE

- ▶ An ISO 9001:2015 Control Panel Manufacturing Company.
- ▶ Dedicate to Customer Service for over last 30 years.
- ▶ Wide range of products. Duly approved & tested by leading laboratories of the country like CPRI & ERDA.
- ▶ Catering to wide spectrum of segments e.g. Textile, Paper, Sugar, Infra, Automobiles, Agro & Food, Steel, PSUs etc.
- ▶ All Panel Activities like Design, Fabrication, Assembly, Powder Coating, Wiring, Bus Baring, Testing, R & D etc. under one roof.
- ▶ Spread over more than 50,000 sq.ft. Covered area.
- ▶ Total human resources directly engaged in operations: almost 200.
- ▶ Approved by leading EPC contractors, consultants & established industrial houses like EIL, PGCIL, MECON, ONGC, BHEL, NTPC, Trident group, SMCC & many more...
- ▶ Authorised franchisee for Siemens SIEPAN 8 PU Low Voltage Panels (Asper-IEC61439)-TTA Panels.

WIDE RANGE OF PRODUCTS

- | | |
|---|---------------------------------|
| ▶ Power Control Centers (PCC) | ▶ Motor Control Centers (MCC) |
| ▶ Power Distribution Boards | ▶ DG Synchronizing & AMF Panels |
| ▶ Control & Relay Panels | ▶ Control Desks |
| ▶ Bus Duct & bus Trunking, rising mains | ▶ ATS/Slip Ring Starters |
| ▶ PLC & AC/DC Drive Panels | ▶ Draw-out panels |
| ▶ Enclosures | ▶ 10-Fold Enclosures |
| ▶ TTA Panels-IEC 61439 Siemens SIEPAN | |



India Pvt. Ltd.
An ISO-9001: 2008 Company



an introduction...

- **An ISO 9001:2015 Control Panel manufacturing company**
- **Dedicated to customer service for over last 25 years**
- **Wide range of Products. Duly approved & tested by leading laboratories of the country like CPRI & ERDA**
- **Catering to wide spectrum of segments e.g. Textile, Paper, Sugar, Infra, Automobiles, Agro & Food, Steel, PSUs etc**
- **All Panel activities like Design, fabrication, assembly, Powder Coating, wiring, Bus baring, Testing, R&D etc. under one roof**
- **Spread over more than 50,000 sq ft covered area**
- **Total human resources directly engaged in operations: almost 200**
- **Approved by leading EPC contractors, consultants & established industrial houses like EIL, PGCIL, MECON, ONGC, BHEL, NTPC, Trident Group, SMCC & many more...**
- **Authorized franchisee for Siemens SIEPAN 8 PU Low Voltage Panels (As per – IEC61439)- TTA Panels**





OUR WORKS



OUR WORKS



OFFICE AREA



WIDE RANGE OF PRODUCTS

Power Control Centers (PCC)

Motor Control Centers (MCC)

Power Distribution Boards

DG Synchronizing & AMF Panels

APFC Panels

Control & Relay Panels

Control Desks

Bus Duct & Bus Trunking, Rising Mains

ATS/Slip Ring Starters

PLC & AC/DC Drive Panels

Draw-out Panels

Enclosures

10-Fold Enclosures

TTA Panels-IEC 61439 Siemens SIEPAN

DEPARTMENTS

Design, Research & Development

Fabrication

Surface Treatment

Powder Coating

Bus Bar

Wiring

Assembly/Production

Quality Control

After Sales/Site Support

Support Departments - Costing & Estimation; Marketing; Finance; HR; IT

FABRICATION SHOP



AMADA PEGA-357 PUNCHING MACHINE

- CAPACITY – 30 TON
- NO. OF STATIONS- 44
- WORKABLE MAX. SHEET SIZE- 1270x 4000MM
- MAX. MATERIAL THICKNESS- 6.5MM & WEIGHT – 100 KG



AMADA PEGA-358 PUNCHING MACHINE

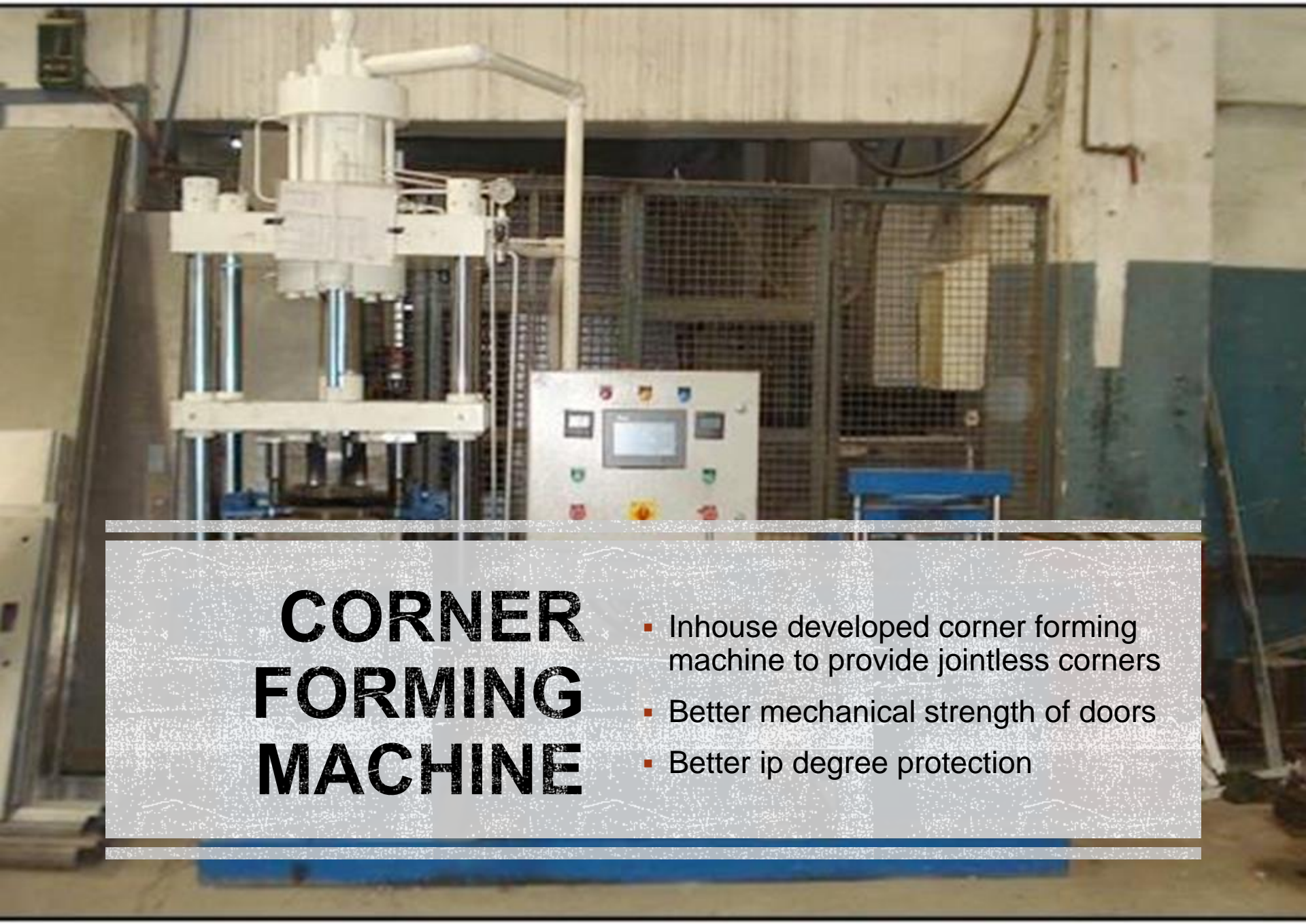
- CAPACITY – 30 TON
- NO. OF STATIONS- 45
- WORKABLE MAX. SHEET SIZE- 1270x 4000MM
- MAX. MATERIAL THICKNESS- 6.5MM & WEIGHT – 100 KG

AMADA

RGM2 1003

AMADA RGM2- 1003 BENDING MACHINE

- CAPACITY – 100 TON
- MAX BEND LENGTH- 3100MM
- STROKE LENGTH- 100MM
- BENDING SPEED- 13MM/S



CORNER FORMING MACHINE

- Inhouse developed corner forming machine to provide jointless corners
- Better mechanical strength of doors
- Better ip degree protection

SURFACE TREATMENT & PAINTING

Metal pretreatment is done with 'Seven Tank Treatment Process' prior to powder coating of the metal surface

DEGREASING: These are necessarily acidic chemicals which help in removal of dust, oil & grease from surface.

RUNNING WATER: To remove unwanted chemical particles

WATER RINSING: Surface is water rinsed to remove unreached conversion coating chemicals

ACTIVATION (PREPHOSPHATING): This is done to prepare the surface for phosphating

PHOSPHATING: Zinc Phosphate coating is crystalline heavy coating gray in color. It provides exceptional painted part durability in corrosive requirements

WATER RINSING: To remove unwanted chemical particles

PASSIVATION: This process is to maintain the zinc phosphate layer on metal so that powder coating layer can be implemented on it.

SEVEN TANK TREATMENT PROCESS



SEVEN TANK PROCESS



POWDER COATING BOOTH



- 3 booths to paint different colors at a time
- Most modern spray guns for better powder spraying
- ConveyORIZED system for handling powder coated parts



OVEN & CONVEYR LINE FOR POWDER COATING



BUSBAR FABRICATION SECTION



- Fully equipped busbar section with all the modern machines like power press, bending etc.
- Busbars are powder coated with black epoxy powder in place of heat shrink sleeve for better insulation
- More number of conductors used resulting into better current carrying capacity
- Inhouse developed polyamide supports & FRP supports on request
- Polyamide supports give better mechanical strength & less water absorption

C & P WIRING SECTION

- Full fledged pneumatic wiring section with precision tools
- Wiring done using inhouse developed plastic grommet & flexible conduits resulting into better insulation from sharp edge & improved IP degree
- Printed ferrule for proper identification



PU FOAM LIQUID GASKET MACHINE



- Jointless gasket resulting in dust proof enclosure, gives improved ip degree protection
- Polyurethane is poured in liquified form & then hardens in seconds
- It fuses with metal door and is unremovable resulting in much improved ip protection
- For different heating & cooling cycles as well as the repeated opening & closing of doors, **the gasket remains fused with the panel door.** Gasket has long life.

ROUTER MACHINE (ENGRAVING)

- For making legend plates through engraving text on plate
- Improved quality of legends & looks attractive
- Faster process



ASSEMBLY SECTION

ASSEMBLY SECTION



- Very large assembling area (15,000 sq. Feet)
- Overhead cranes from assembly to dispatch area
- Equipped with pneumatic tooling
- Specially laid process & floor rails are fully leveled thus giving better quality panels

ASSEMBLY SECTION



QUALITY CONTROL LAB



- Fully equipped quality lab to test from raw material to stage inspection up to final product testing
- Primary injection up to 6000a
- Insulation with 1000V megger
- High voltage test at 2.5 kV for 1 sec



6000 A PRIMARY INJECTION KIT

INNOVATIONS



BUSBAR WITH EDGE BENDING



WIRE GROMMET



POLYIMIDE SUPPORTS



DEEP DRAW SECTION FOR LEGEND PLATES

10-FOLD ENCLOSURE



- Advanced series of modular Industrial Enclosures with high class 10-fold frame construction
- Very robust Frames, comprising of liquid polyurethane gasket & special corner forming process
- Higher weight bearing capacity than ordinary enclosure
- Higher component density resulting into less no of panels



MANAGEMENT SYSTEM CERTIFICATE

Certificate no.:
282251-2019-AQ-IND-RvA

Initial certification date:
22 October 2003

Valid:
29 December 2021 – 21 October 2024
Expiry date of last certification cycle:
21 October 2021
Date of last recertification:
15 December 2021

This is to certify that the management system of
Vidhyut Control (India) Pvt. Ltd.
D-12 & 13, Sector-17, Kavi Nagar Industrial Area, Ghaziabad - 201 001, Uttar Pradesh, India

has been found to conform to the Quality Management System standard:
ISO 9001:2015

This certificate is valid for the following scope:
Design & manufacture of electrical draw out, fixed type panels, bus ducts and shaft doors

Place and date:
Chennai, 29 December 2021

For the issuing office:
DNV - Business Assurance
ROMA, No. 10, GST Road, Alandur, Chennai -
600 016, India



Sivadasan Madiyath
Management Representative



ISO CERTIFICATE

CUSTOMERS

GAUR CITY MALL, GAUR CHOWK, GREATER NOIDA (W)

CLIENT-
GAURSONS
LTD.





C N AUTOMATION, GUJARAT DRIVE PANEL





SATIA INDUSTRIES LTD., PUNJAB SIEMENS SIEPAN TTA PANELS





ESTER FILMTECH LTD., TELANGANA SIEMENS SIEPAN TTA PANELS



REPUTED CLIENTS

Textiles

- Trident Ltd.
- Siyaram Silk Mills Ltd
- Golden Fiber, Amravati
- Vardhman Yarns & Thread Ltd.
- Arihant Spinning Mills
- Auro Dying
- Amko Exports
- Satluj Textiles
- Ester Industries
- Suryodaya Textile Pvt.ltd.
- Nahar Spinning Mills
- Alps Industries Ltd.
- Birla Textiles Ltd.
- Weavetex Overseas Ltd.
- TT Ltd.
- Oswal Group
- Gopeshwar Spinning Mills
- Ashi Export
- Dwarkadheesh Industries Ltd.

Paper & Packaging

- Ruby Macons Ltd.
- Mehali Papers Pvt. Ltd.
- Anand Duplex Board Ltd.
- Anand Triplex Board Ltd.
- Anand Tissue Ltd.
- Bindal Duplex Ltd.
- Bindal Paper Ltd.
- Khatima Paper Ltd.
- Nikita Paper Ltd.
- Daman Ganga Paper Ltd.
- Kalpatru Papers Ltd.
- Rainbow Papers Ltd.
- Devpriya Industries
- Dev Agro Paper Ltd.
- Dev Priya Products Ltd.
- Dev Fibbers Ltd.
- MBD Printographics
- J.B Daruka Papers
- Shree Bahvani Paper Mill Ltd.
- Everest Polymers Pvt. Ltd.

Paper & Packaging

- Shamli Paper Ltd.
- Siddhomal Paper Mill
- Sikka Paper
- P. N. Paper Ltd.
- Orient Paper Ltd.
- Pragati Paper Mill Ltd.
- Ved Cellulose Ltd.
- Shri Sitaram Paper Mill Ltd.
- Mohit Paper Mills
- Centuary Paper Mills
- Uflex Ltd.
- Montage Enterprises Pvt. Ltd
- Ultimate Flexipack Pvt. Ltd.
- Polyplex Corporation Ltd.
- Vacmet India Ltd.
- Ester Industries Ltd.
- Everest Polymers Pvt. Ltd.
- MAX INDIA LTD.
- HJI GMMCO LTD.

REPUTED CLIENTS

Automobile

- Rico Auto Industries Ltd.
- Toyota Ltd.
- Tata Motors
- Honda Motorcycle & Scooter (i) Ltd.
- Hero Honda Motors Ltd.
- Honda Siel Ltd.
- Maruti Suzuki Ltd.
- Yamaha Motor India Pvt. Ltd.
- Shri Ram Pistons & Rings Ltd.
- Rico Auto Industries Ltd.
- Bharat Gear Ltd.
- Galio Indiahi Tech Gears Ltd.
- Unitech Machines Ltd.
- Keihin Fiysubros Ltd.
- Amtek Diamond
- Omax Autos Ltd.

Automation

- Rockwell Automation A/c
Maithan Ispat
- Indigenous Control
- Tycon Automation
- Word Technology (Dev Priya)
- C. N. Automation
- ATC Automation
- AEAB Automation
- Rhythm Automation

Food & Beverages

- Harvest Gold Industries
- Ready Roti India
- Britannia Industries
- Heinz Ltd.
- Yakult Danone
- Nestle Ltd.

Cement

- Ambuja Cememnts Ltd.
- Jaiprakash Associates (Ddala)
- Jaiprakash Associates (Bhuj)
- Jaiprakash Associates (Chunar)
- Jaiprakash Associates (Panipat)
- Jaiprakash Associates (Baga,
Solan)
- Jaiprakash Associates (Bagheri)
- Jaiprakash Associates (Siddhi,
M.P.)
- Gujrat Anjan Cement Ltd.
- Shree Cement Ltd.
- Dalmia Cement Bharat Ltd.
- Calcom Cement India Ltd.

Footwear

- Relaxo Footwear Ltd.
- Diamond Footwear Ltd.

REPUTED CLIENTS

Sugar & Distillery

- Tikaula Sugar Mills Ltd.
- Bajaj Hindustan Sugar Ltd. (Gola)
- Bajaj Hindustan Sugar Ltd. (Palia)
- Bajaj Hindustan Sugar Ltd. (Kinouni)
- Bajaj Hindustan Sugar Ltd. (Saharanpur)
- Bajaj Hindustan Sugar Ltd. (Lakhimpur)
- Bajaj Hindustan Sugar Ltd. (Thanabhawan)
- Bajaj Hindustan Sugar Ltd. (Budhna)
- Bajaj Hindustan Sugar Ltd. (Pilibhit)
- Bajaj Hindustan Sugar Ltd. (Utraula)
- Bajaj Ecotech Ltd. (Kinouni)
- Khaitan India Ltd.
- Triveni Engineering & Industries
- DSCL Sugar Ltd.
- Oudh Sugar Ltd.
- Simbhauri Sugar Mill
- Harinagar Sugar Mills
- Titavi Sugar
- Eastern Sugar Mills Ltd., Nepal
- Sweet Crystalphilippnes
- Mawana Sugar Mill Ltd.
- Dhampur Sugar Mill

College & Hospitals

- AKG Engineering College
- Krishna Engg. Institute of Technology
- Krishna Dental College
- Krishna Engineering College
- JP Hospital
- Chadha Charitable Trust Naturopathy Hospital
- Garg Heart & Multispecialty Hospital
- G.S. Medical College Hospital
- ESIC Hospital, Varanasi
- Shreya Medicare
- Ram Saran Indo-German
- Mohan Swaroop Hospital
- Manyavar Kashiram Hospital

IT & Software

- Industrial IT Solution
- Fact Software
- Hughes Software

REPUTED CLIENTS

Infrastructure

- Purvanchal Construction Pvt. Ltd.
- Gaursons India Ltd.
- Ajnara India Ltd.
- Wave Infratrade
- Samridhi Reality Homes
- Ats Infrastructure Ltd.
- Avarthnah Infrastructure Pvt. Ltd.
- Exotica Housing Pvt. Ltd.
- K World Group
- Mahagun India Pvt. Ltd.
- Prateek Group
- Sare Homes Project Services Pvt. Ltd.
- Sds Infratech Pvt. Ltd.
- Stellar Group
- Vasu Infrastructure Pvt. Ltd.

Infrastructure

- Supertech Ltd.
- Victory Infra Projects Pvt. Ltd
- Sikka Group
- Mahalaxmi Group
- Today Homes
- Anthem Infrastructure Pvt. Ltd.
- Fusion Builtech Pvt. Ltd.
- GLR Real Estate Pvt. Ltd.
- Skardi Realtech Pvt. Ltd.
- Emenox Group
- S G Estates Ltd
- Landcraft Developers

Chemicals & Minerals

- Continental Rico Hydraulic
- Riddhi Siddhi Gluco Biols Ltd.
- Kanoria Chemicals & Industries
- Laxmi Chemical Ltd.
- Sharda Energy & Minerals Ltd.
- Sharda Solvent Ltd.
- Ved Cellulose Ltd.
- DCM Chemical Ltd.
- SRF Ltd

EPC/PSUs

- EIL
- PGCIL
- MECON
- NTPC
- BHEL
- ONGC/IOCL/BPCL/
HPCL/GAIL

REPUTED CLIENTS

Steel & Ispat Companies

- Bhilai Steel Plant
- Maithan Ispat
- Shri Rathi Steel Pvt Ltd
- Jindal Saw Pipe Ltd
- Ace Hardware
- Advance Steel Tubes
- Shree Nath Ji Ispat
- Shri Nath Ji Motor
- Goa Sponge Iron
- KVS Steels Ltd.
- Monnet Ispat Ltd
- IFE Iron & Steels Ltd
- Radha Madhav Exim
- Shree Radhe Ispat
- Bhushan Steels Ltd
- Amba Steels Ltd
- Kei Industries Ltd.
- Flat China
- Kalpatru Alloys Ltd.
- Sharda Energy Minerals Ltd.

Food & Beverages

- Cadbury Ltd.
- Nestle India Ltd.
- Pepsico Ltd.
- Parle Biscuits (P) Ltd.
- Yakult Danone (I) Pvt. Ltd.
- Britannia Industries Ltd.
- Harvest Gold Industries Ltd.
- Heinz Ltd.
- Tetra Pak India Pvt. Ltd.
- A.b. Mauri India (P) Ltd.
- Ready Roti India Pvt. Ltd.
- Riddhi Siddhi Gluco Boils Ltd.
- Motherboon Food (P) Ltd.
- Dharampal Satyapal Ltd.
- Dharampal Premchand Ltd.
- Paras Dairy
- Universal Dairy
- Fryo
- Rei Agro Ltd
- Sourcewell Foods Agro Pvt Ltd.

Hotels

- Hotel Taj Mahal, New Delhi
- Hotel Oberoi, New Delhi
- Hotel Jaypee Basant, New Delhi
- Hotel Eros, New Delhi
- Marriot Courtyard, Gurugram
- The Khyber Himalyan Resort & Spa, Gulmarg
- Ginger, Noida
- Ginger, Greater Noida
- Ginger, Chandigarh
- Ginger Hotel Bhubaneshwar
- Corbett Hideaway, Ramnagar, U.k.
- Taj Gateway Hotel, Varanasi
- Crystal Hotel Agra
- Mahagun Sarovar Portico Suites, Vaishali
- Fairfield & Courtyard By Marriott, Bangalore
- Sidartha Palace



ANC Services
A BOND OF TRUST

Cooperation With:



Vidhyut Control
India Pvt. Ltd.
Since : 1994

Viduyt Control India Pvt. Ltd.
D-12 & 13, Sec - 17, Kavi Nagar
Industrial Area, Ghaziabad,
UP - 201002

Specialist in :
Mgf. of All types of LT, PCC,
MCC Panel



POWERTECH
INDIA
Since : 1991

Powertech India
D - 6, Kavi Nagar Industrial Area,
Ghaziabad, U.P. - 201002

Specialist in :
Mgf. of CSS, VCB,
RMU



SETCO

Shiv Electric & Trading Company
GF- 16/17, Murari Complex, GT Road,
Ghaziabad - 201001

Specialist in :
Authorised Dealer for Havells, Polycab,
KEI, RR Kabel, Finolex, Grandlay,
Crompton, Bajaj, Anchor (by Panasonic),
Lloyd, Halonix Lighting, Great-White,
Norisys, 3M, Legrand, Lauritz,
Knudsen, Schneider and others.



**JUPITER INTERNATIONAL
INFRA PRIVATE LIMITED**
Since : 2007

Jupiter International Infra Pvt. Ltd.
Khasra No-1039, Dayal Marg,
Vill.-Kanshi, Meerut - 250205

Specialist in :
Mgf. of M.S Bridge for
Railway/Highway, N.H. Signages



GB
Since : 2002

G B Enterprises Pvt. Ltd.
5 Km Stone, Sampla-Beri Road, Kultana,
Ismaila 11B, Sampla, Distt-Rohtak,
Haryana - 124517

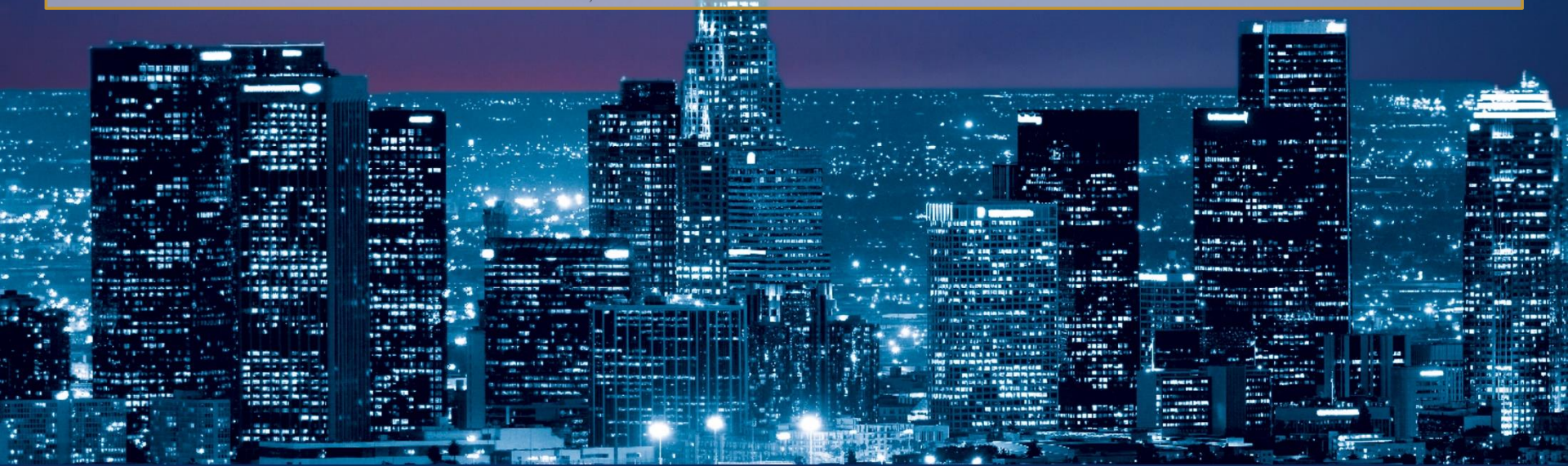
Specialist in :
Mgf. of All types of PEB
Structure, Cable Tray, Shelters



DHANAD
"Be Smart, Choose Smart"

Dhanad International Pvt. Ltd.
W-52, First Floor, Landcraft Golf Links,
NH-9, Ghaziabad

Specialist in :
Deals in Facade Lighting, Highway
Lighting, Light & Sound for
Tourism Dept. and all kind of
Indoor/Outdoor Lighting



ANC Services LLP

(GST No. 09ABXFA2201P1ZZ)



W-52, Landcraft GolfLinks, NH-24, Ghaziabad



office@ancservices.in



www.ancservices.in



+91-89200 65089, +91-90681 22937

Connect with us :

